

AGENDA SUPPLEMENT (1)

Meeting: Strategic Planning Committee
Place: Council Chamber - County Hall, Trowbridge BA14 8JN
Date: Wednesday 11 January 2023
Time: 10.30 am

The Agenda for the above meeting was published on 3 January 2023. Additional documents are now available and are attached to this Agenda Supplement.

Please direct any enquiries on this Agenda to Tara Hunt, of Democratic Services, County Hall, Bythesea Road, Trowbridge, direct line 01225 718352 or email tara.hunt@wiltshire.gov.uk

Press enquiries to Communications on direct lines (01225)713114/713115.

This Agenda and all the documents referred to within it are available on the Council's website at www.wiltshire.gov.uk

7 **Planning Applications** *(Pages 3 - 20)*

- Presentation slides for the meeting.

DATE OF PUBLICATION: 9 January 2023

This page is intentionally left blank

Strategic Planning Committee

11th January 2023

7a) PL/2021/06519 - Purdys Farm, Wood Lane, Braydon, Swindon, Wilts, SN5 0AH

Change of use of land to provide an extension to existing Gypsy / Traveller site

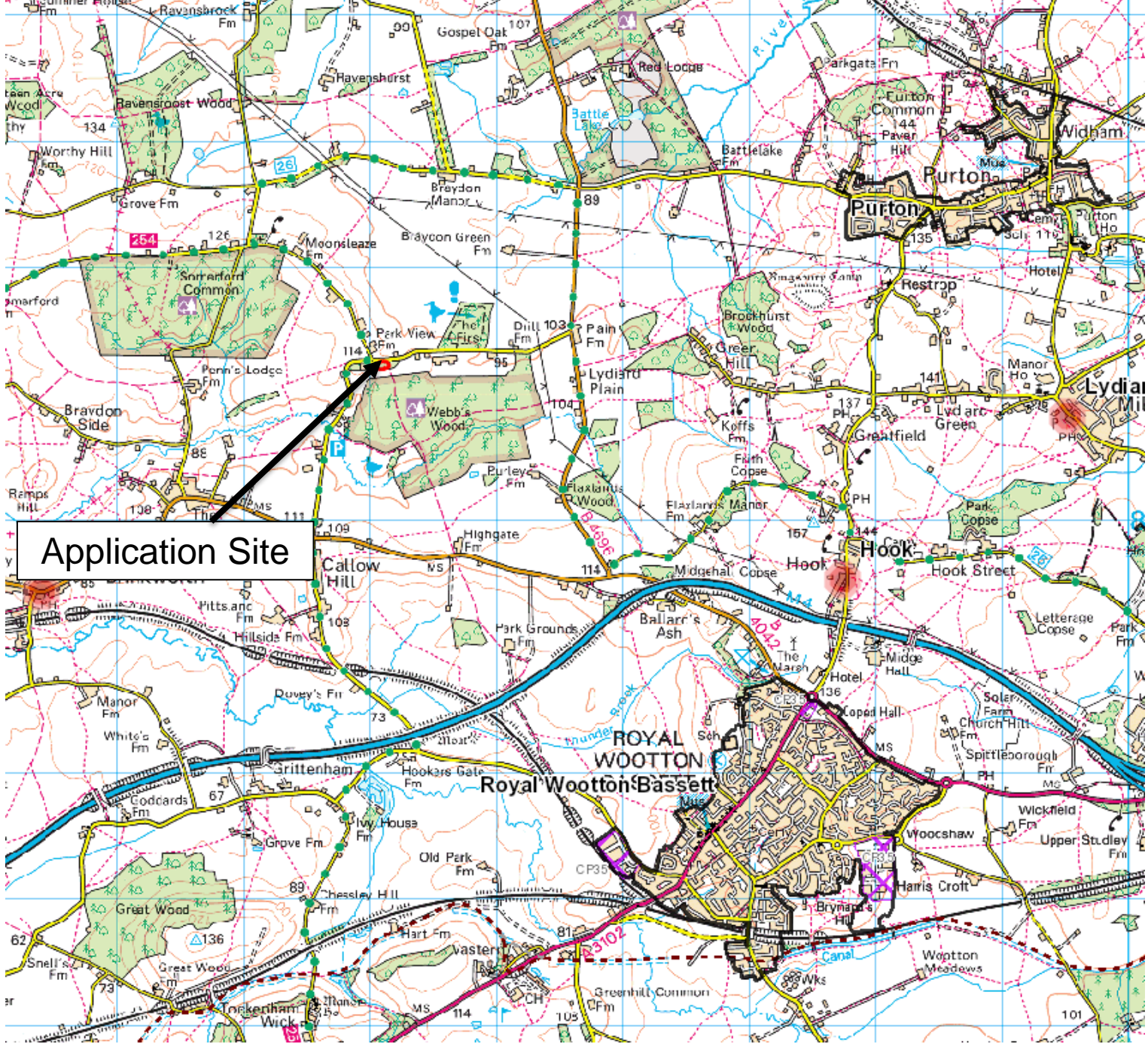
Recommendation: Approve with Conditions



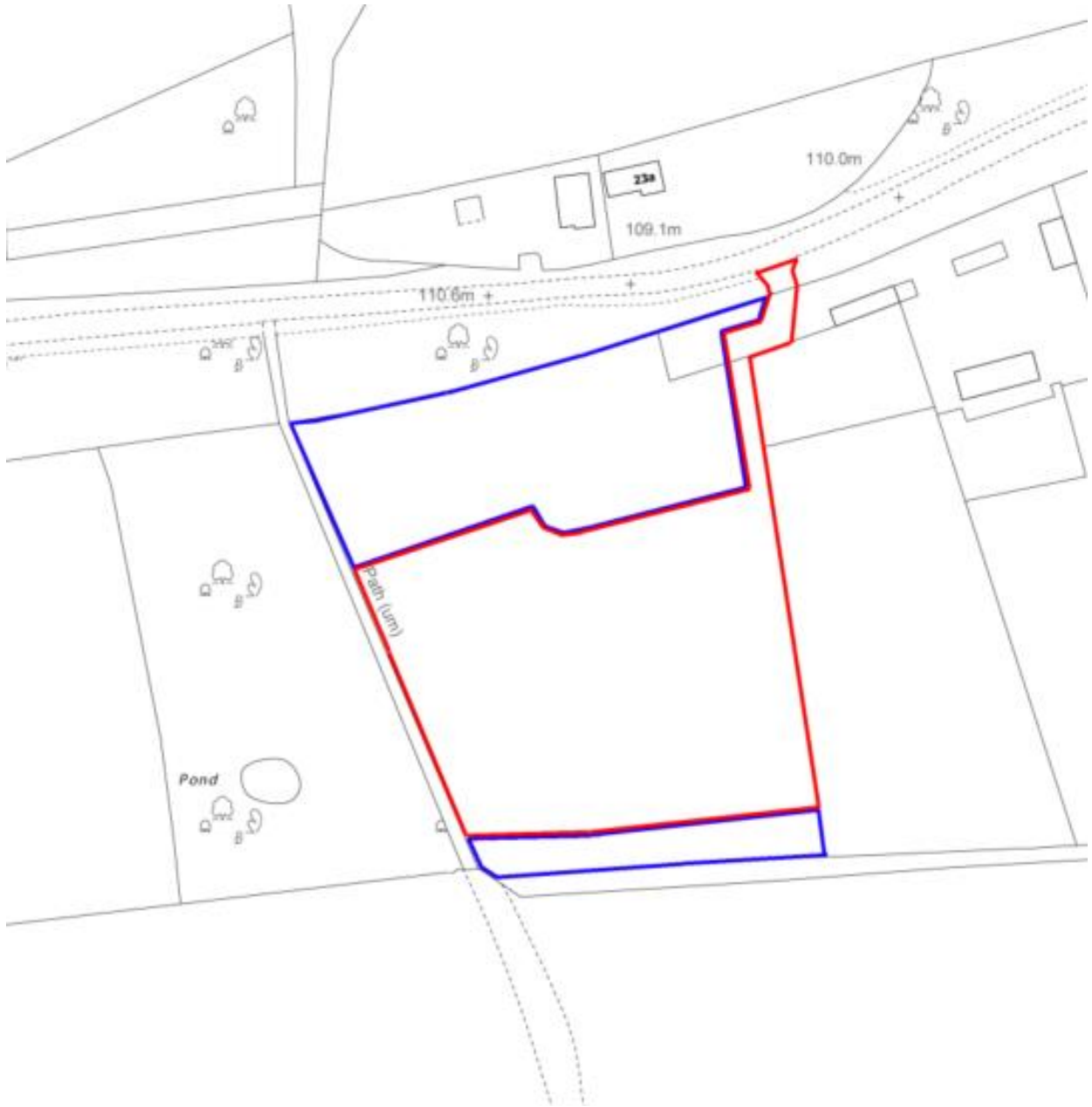
Site Location Plan

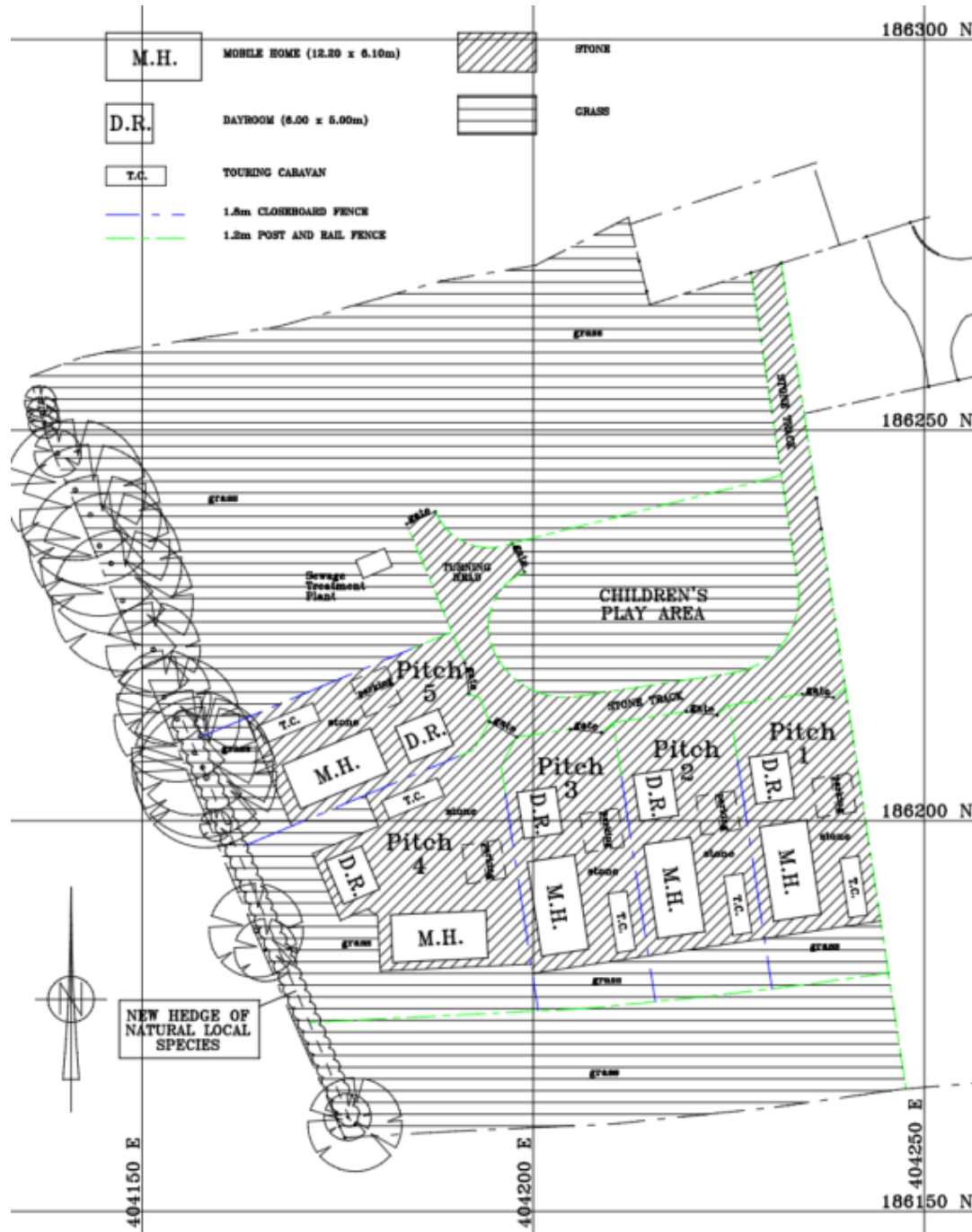


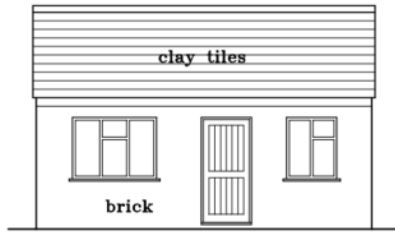
Aerial Photography



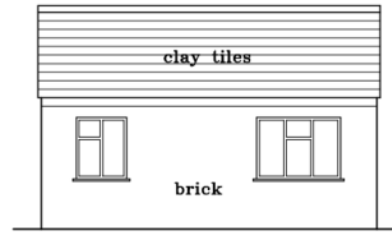
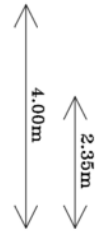
Application Site



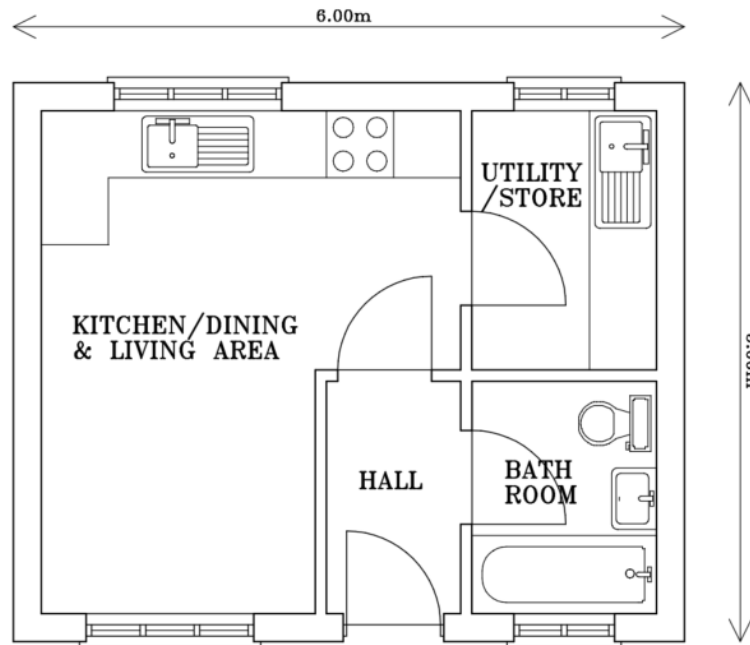
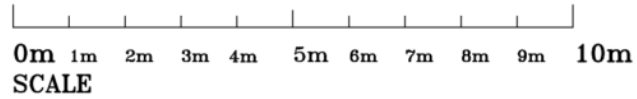


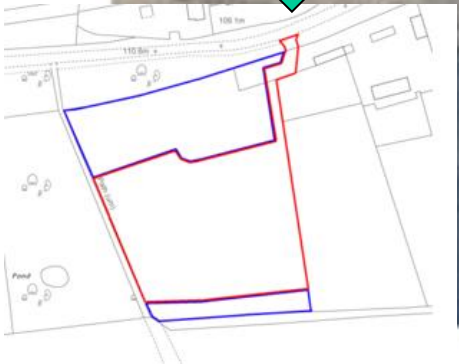


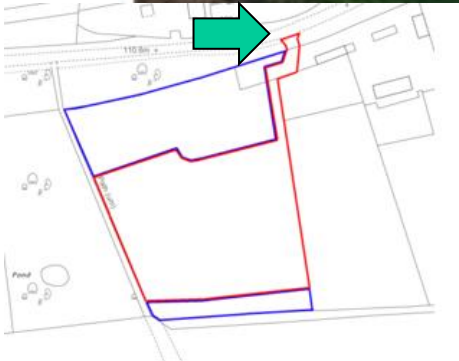
FRONT ELEVATION

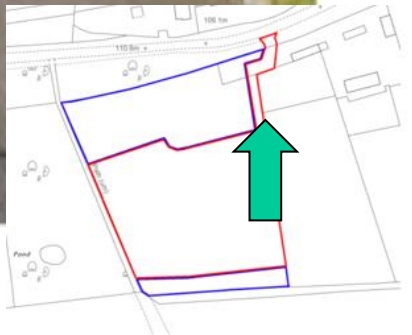


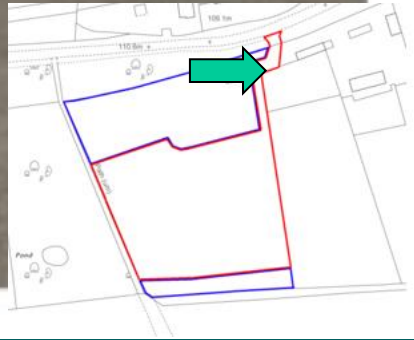
REAR ELEVATION

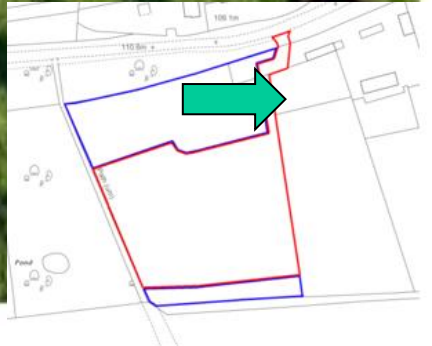


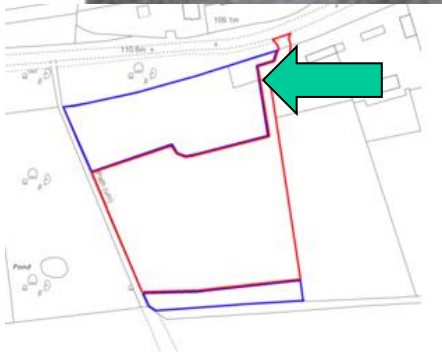


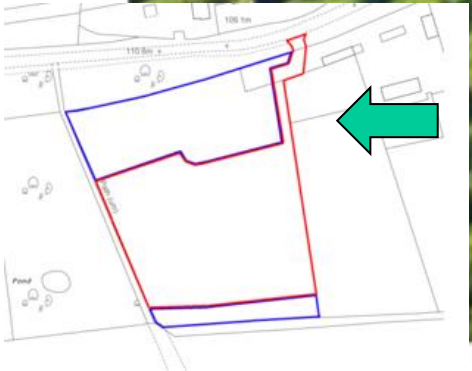


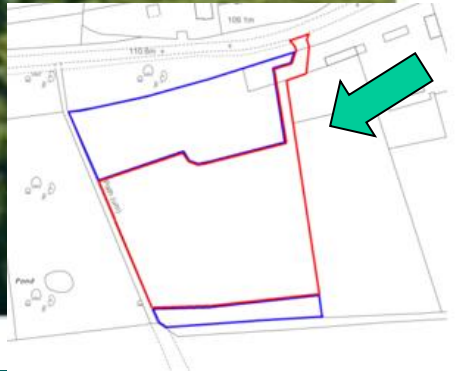


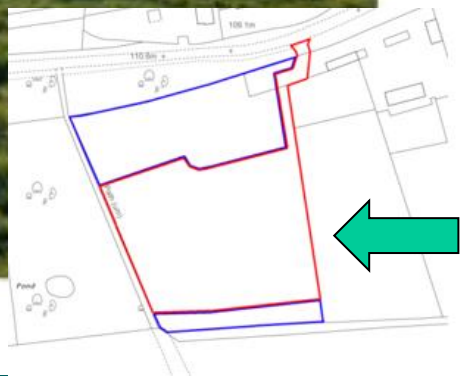








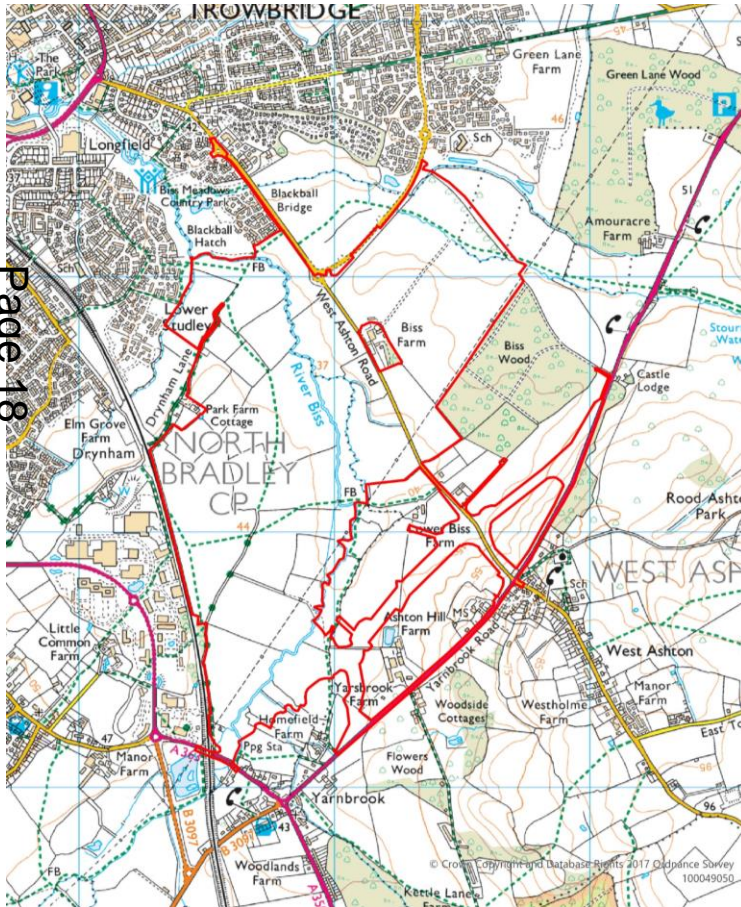




7b) 15/04736/OUT - Land south east of Trowbridge

Outline planning application for mixed use development comprising: residential (up to 2,500 dwellings - Classes C3 & C2); employment (Class E ('Business' only), B2, and B8); two local centres (Classes E, C2, and C3); two primary schools, one secondary school, ecological visitor facility, public open space, landscaping and associated highway works including for the 'Yarnbrook / West Ashton Relief Road' and the access junctions.

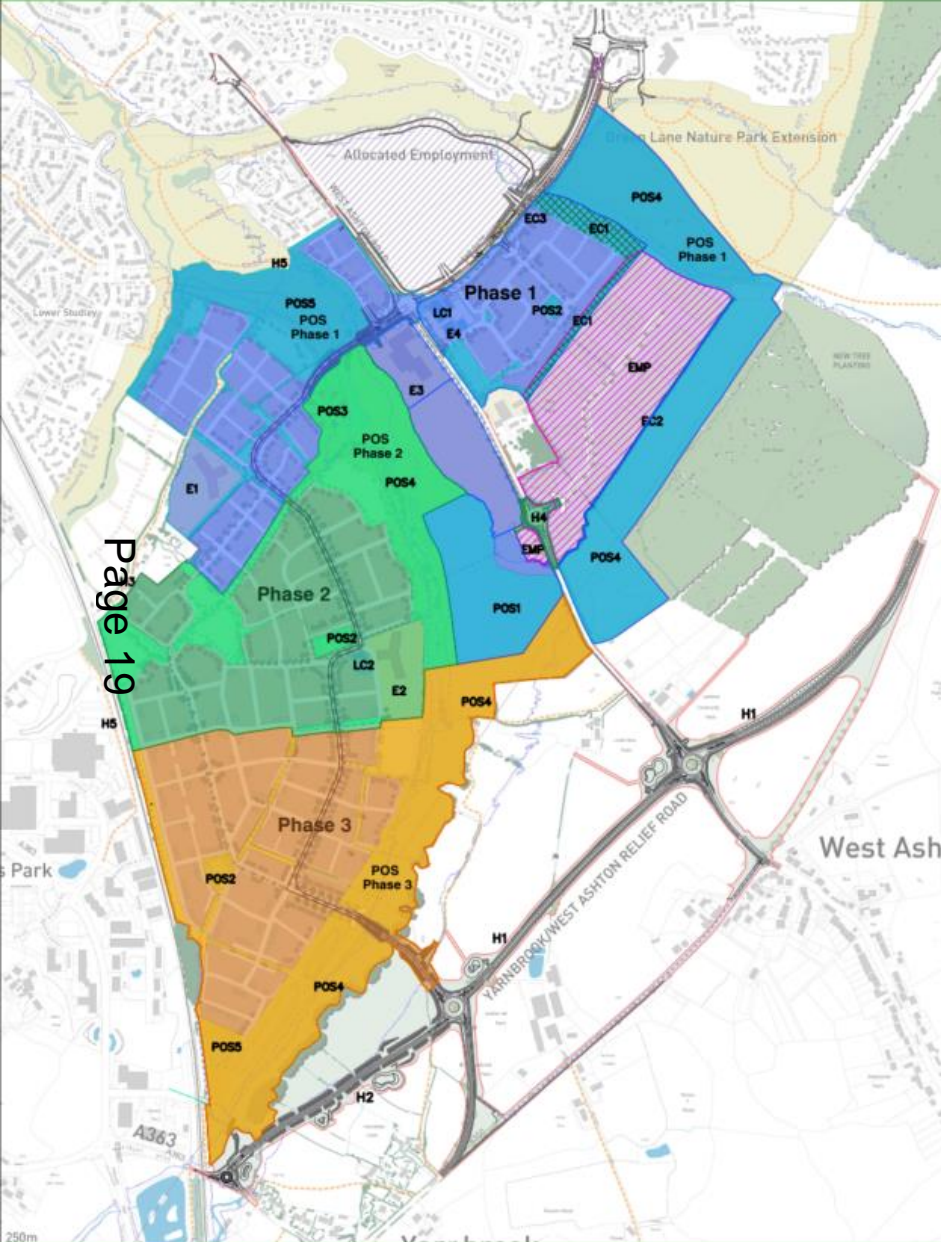
Recommendation: Approve with Conditions



Site Location Plan



Aerial Photography



Land Use / Facility	Area	Prior to Commencement	Phase 1 Approx 725 dwellings	Phase 2 Approx 725 dwellings	Phase 3 Approx 750 dwellings	Total 2,200 dwellings
Education						
E1	1st JFE Primary School (include provision for a maximum of 30 Early Years places)	1.83ha	By 200 occupancies (Land) By 400 occupancies (Direct Delivery)			1
E2	2nd JFE Primary School (include provision for a maximum of 30 Early Years places)	1.83ha		By 1,000 occupancies (Land) By 1,200 occupancies (Direct Delivery)		1
E3	Secondary School	0.24ha	By 300 occupancies (Land)			1
E4	Early Learning Site		By c. 250 occupancies (Direct Delivery)	By c. 1,000 occupancies (Direct Delivery)		1
Highways & Transport						
H1	WVARR East		By the development of the 1000th dwelling or sign from first occupation			
H2	WVARR West		By the development of the 1000th dwelling or sign from first occupation			
H3	Dryham Lane Access			75% occupancies within Phase (c. 1,200 occupancies)		
H4	Access to Employment Buffer/20M			By 1,250 occupancies		
H5	Off-site Footpath Improvements		75% occupancies within Phase (c. 544 occupancies)	75% occupancies within Phase (c. 1,200 occupancies)		
Local Centre						
LC1	Local Centre 1	1.00ha	Marketed within this phase (no specific req.)			1
LC2	Local Centre 2	0.20ha		Marketed within this phase (no specific req.)		1
Public Open Space						
POS1	4x Sports pitch + Changing Rooms	5.69ha		75% within the phase by 1,000		4
POS2	LEAPs	400sqm each	75% occupancies within Phase (c. 544 occupancies)	75% occupancies within Phase (c. 1,200 occupancies)	75% occupancies within Phase (c. 2,013 occupancies)	3
POS3	Destination Play Area	1,200sqm		75% occupancies within Phase (c. 1,200 occupancies)		1
POS4	Country Park & Ecological Buffer	46.2ha	23.78ha by 75% occupancies within Phase (c. 544 occupancies)	7.46ha by 75% occupancies within Phase (c. 1,200 occupancies)	15.36ha by 75% occupancies within Phase (c. 2,013 occupancies)	46.2ha
POS5	Alfments	0.90ha			75% occupancies within Phase (c. 2,013 occupancies)	1
Ecological Mitigation						
EC1	Advanced Ecological Mitigation	1.75ha	Prior to commencement			1.75ha
EC2	Further Ecological Mitigation	0.14ha	By 100 occupancies			0.14ha
EC3	Visitor Centre	0.09ha	By 300 occupancies			0.09ha
Employment Land						
EMP	Marketing of Employment Land	11.58ha		By 1,250 occupancies		11.58ha
Bus Strategy						
BS1	Bus Strategy Phase 1		By 51 occupancies			
BS2	Bus Strategy Phase 2		By 51 occupancies south of West Ashton Road			

Page 19

- Application Site Boundary
 - Phase 1 (725 Dwellings)
 - Phase 2 (725 Dwellings)
 - Phase 3 (750 Dwellings)
 - Phase 1 POS (33.08 ha)
 - Phase 2 POS (15.08 ha)
 - Phase 3 POS (19.24 ha)
 - Employment Land
 - Advanced/Further Ecological Mitigation
- Total POS (67.40 ha)

UNAPPORTIONED SCHEDULE 10 DRAWING

ST KR 31.08.18 NT38A2

889_200

PHASING PLAN
Ashton Park, Trowbridge

This drawing is the copyright of Persimmon Homes. It and its use are subject to planning conditions and other restrictions which may apply to the site and its development.

Strategic Planning Committee

11th January 2023